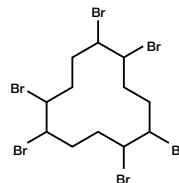


Description

Hexabromocyclododecane

SAYTEX HP-900 flame retardant is a high-purity grade of hexabromocyclododecane containing aliphatic bromine. It is available in powder or granular form.

**Applications**

SAYTEX HP-900 flame retardant is used primarily in extruded (XPS) or suspension-polymerized polystyrene foam (EPS). With a stabilization package and proper processing conditions, it can be used in polystyrene and polypropylene resins. It can also be used in textile treatments, adhesives and coating applications.

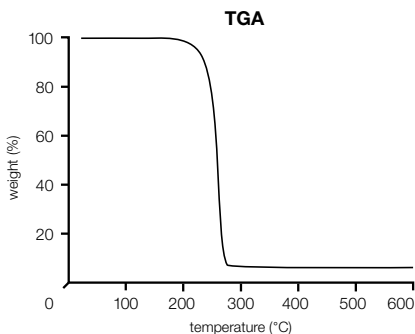
Additional information on the use of SAYTEX HP-900 flame retardant may be found in various Technical Bulletins, which are available from Albemarle.

Benefits and Features

SAYTEX HP-900 flame retardant contains a high amount of alicyclic bromine. Its cyclo aliphatic nature results in a low melting point and high solubility in common solvents. It is possible to achieve transparent flame retardant formulations with SAYTEX HP-900 flame retardant. It can be used without the addition of Sb_2O_3 , a SARA 313 material. SAYTEX HP-900 flame retardant is not on the SARA 313 list. Its high bromine content allows reduced loadings and its low melting point provides melt processability, resulting in minimal effect on the mechanical properties of formulated systems. SAYTEX HP-900 flame retardant is available in either powder (HP-900P) or granular (HP-900G) form.

Typical Properties

% Bromine (theoretical)	74.7	
Melt range (°C)	180 - 185	
Molecular weight	641.7	
Appearance/form	white/powder or granules	
Specific gravity	2.37	
	Powder (HP-900P)	Granules (HP-900G)
Bulk density (Hosokawa powder tester, lb/ft ³ , [Kg/m ³])		
Packed	90 [1436]	83 [1334]
Aerated	61 [978]	76 [1213]
Average particle size (mm)	0.03	2.41
Refractive index	-	
Solubility (weight % at 25°C)		
Water	< 0.01	
Acetone	8.6	
Methanol	0.15	
Toluene	6.40	
<i>n</i> -Pentane	0.01	
Isopentane	0.01	
Cyclopentane	0.05	
Styrene	8.00	
Chlorobenzene	2.80	
Methylene dibromide	3.60	
Dimethyl formamide	33.90	
TGA (TA Instruments, model 2950, 10°C/min under N ₂)		
1% weight loss	215°C	
5% weight loss	244°C	
10% weight loss	255°C	
50% weight loss	269°C	
90% weight loss	274°C	



These properties are typical but do not constitute a specification either in part or as a whole. Specification data is available on request from sales, customer service or customer technical service.

Shipping Information

Transportation classification: not regulated for transportation
Harmonized tariff number: 2903.59

Packaging and minimum order information is available from sales or customer service.

Chemical Registration Numbers

CAS: 3194-55-6
EINECS: 2216959
MITI: 3-2254

Responsible Care

Albemarle is committed to the safety and well-being of our customers, employees and the community at large. Material Safety Data Sheets (MSDS) are available upon request from the offices listed below.

The information presented herein is believed to be accurate and reliable, but is presented without guarantee or responsibility on the part of Albemarle Corporation. It is the responsibility of the user to comply with all applicable laws and regulations and to provide for a safe workplace. The user should consider any health or safety hazards or information contained herein only as a guide, and should take those precautions which are necessary or prudent to instruct employees and to develop work practice procedures in order to promote a safe work environment. Further, nothing contained herein shall be taken as an inducement or recommendation to manufacture or use any of the herein materials or processes in violation of existing or future patents.



AMERICAS 451 Florida Street • Baton Rouge, Louisiana 70801-1765 • Tel: 225-388-7402 or 800-535-3030 • Fax: 225-388-7848 **EUROPE** Parc Scientifique Einstein • Rue du Bosquet 9 • B-1348 Louvain-la-Neuve Sud, Belgium • Tel: 32-10-48-1711 • Fax: 32-10-48-1717 **EUROPE** B116 • 95 Rue Du General De Gaulle • F-68802 Thann-Cedex, France • Tel: 33-3-8938-4600 • Fax: 33-3-8938-4601 **ASIA PACIFIC** 111 Somerset Road #13-03 • Singapore 238164 • Tel: 65-732-6286 • Fax: 65-737-4155 **ASIA PACIFIC** 16th Floor, Fukoku Seimei Building • 2-2, Uchisaiwaicho, 2-Chome • Chiyoda-ku, Tokyo 100, Japan • Tel: 81-3-5251-0791 • Fax: 81-3-3500-5623 **ASIA PACIFIC** China World Tower, Room 1317 • No. 1 Jian Guo Men Wai Avenue • Beijing 100004 China • Tel: 86-10-6505-4153 or 86-10-6505-4154 • Fax: 86-10-6505-4150